

IBC Bolted Ball Valves



IBC Polypropylene Bolted Ball Valves



Fits Hoover Tuff Tank II



Fits Hoover APT

PART NO.	DESCRIPTION	OPENING THRU BALL
POLY BOLTED BALL VALVE		
VFB201	2" Male QDC x 2" Female QDC	1-1/2"

PART NO.	DESCRIPTION	OPENING THRU BALL
POLY BOLTED BALL VALVE		
VSFB201	2" Male QDC Stubby Valve x 2" Female QDC	1-1/2"



Fits Clawson Rock Tank



PART NO.	DESCRIPTION	OPENING THRU BALL
POLY BOLTED BALL VALVE		
VSFTF202A	2" Male QDC x Four Bolt Tank Adapter w/Cap & Lanyard	1-1/2"

PART NO.	DESCRIPTION	OPENING THRU BALL
POLY BOLTED BALL VALVE		
VSFMT200	2" Male Adapter x 2" Male NPT Max PSI 100, Pipe Size 2"	1-1/2"

2" Poly Spin Weld Ball Valves

Features:

- PTFE seats
- Precision molded polypropylene is reinforced w/ fiberglass
- Zinc alloy
- FKM, EPDM and Santoprene collar gaskets available
- Handles close in either direction

W230237



WSMT210FSA



PART NO.	DESCRIPTION	MAX PSI
2" POLY SPIN WELD BALL VALVES		
W230237	2" Poly Spinweld Valve With NPT Outlet & Cap & Foil Seal With FKM Gasket -Mauser	20
W230238	2" Poly Spinweld Valve With QDC Outlet & Cap & Foil Seal With FKM Gasket -Mauser	20
W230239	2" Poly Spinweld Valve With NPT Outlet & Cap & Foil Seal With EPDM Gasket -Mauser	20
W230240	2" Poly Spinweld Valve With QDC Outlet & Cap & Foil Seal With EPDM Gasket -Mauser	20
WSF210FSA	2" Poly Spinweld Valve With QDC Outlet, Foil Seal & Cap With Santoprene Gasket	50
WSF210FSAV	2" Poly Spinweld Valve With QDC Outlet, Foil Seal & Cap With FKM Gasket	50
WSMT210FSA	2" Poly Spinweld Valve With NPT Outlet, Foil Seal & Cap With Santoprene Gasket	225
WSMT210FSAV	2" Poly Spinweld Valve With NPT Outlet, Foil Seal & Cap With FKM Gasket	225

FDA Union Valves



FDA Union Valves

Features:

- Precision molded in glass reinforced polypropylene, for strength and chemical resistance.
- PTFE seats for smooth operation and proper sealing characteristics.
- Double EPDM O-rings in stem area for extra sealing protection.
- Interlocking body and end plate to allow easy thread connection when installing valves.
- Maximum operating pressure 100 P.S.I. at 70°F.



UV204FPFD

PART NO.	DESCRIPTION
UNION VALVE ADAPTERS	
MBP200	2" Buttress x 2" NPT Assembly-White
NIP2101	2" NPT x BSP Nipple-White

PART NO.	DESCRIPTION
UNION VALVE	
UV204FPFD	2" FDA Union Valve-EPDM

Poly IBC / Spray Tank Lids & Poly Accessories

6" Poly IBC & Spray Tank lids



6" IBC SOLID TANK LIDS

6" IBC TANK LIDS W/UNVENTED 2" PLUG

6" IBC TANK LIDS W/VENTED 2" PLUG

PART NO.	DESCRIPTION
6" POLY IBC & SPRAY TANK LIDS	
TL650S	6" Solid Tank Lid w/ Santoprene Gasket
TL651S	6" Tank Lid w/Unvented 2" Plug w/ Santoprene Gasket
TL651E	6" Tank Lid w/Unvented 2" Plug w/ EPDM Gasket
TL652S	6" Tank Lid w/Vented 2" Plug w/ Santoprene Gasket
TL652E	6" Tank Lid w/Vented 2" Plug w/ EPDM Gasket

2" VENTED & NON-VENTED BUNG PLUGS



231MPT

231EPA

TL6531

PART NO.	DESCRIPTION
2" VENTED & NON-VENTED BUNG PLUGS	
231MPT	2" MPT Solid Bung w/EPDM Gasket
231MPTBN	2" MPT Solid Bung w/Buna Nitrile Gasket
TL6531	2" Vented Plug w/EPDM Gasket

Poly Siphon Tubes



FKM (VITON TYPE)	DESCRIPTION
POLY SIPHON TUBES	
ST200	2" Poly Siphon Tube
ST300	3" Poly Siphon Tube

Poly IBC / Spray Tank Lids & Poly Accessories



DIN60 (Buttress)
Thread



PART NO.	DESCRIPTION
2" BUTTRESS X 2" MALE NPT	
TA283	2" Buttress x 2" Male NPT Threads w/Gasket

DIN60 (Buttress)
Thread



PART NO.	DESCRIPTION
2" BUTTRESS X 2" MALE ADAPTER	
TA283QD	2" Buttress x 2" Male Adapter QDC w/ Gasket



201FPT



211FPT



60FDIN

PART NO.	DESCRIPTION
CAPS	
201FPT	2" Female NPT Cap
211FPT	2" Female NPT Cap
60FDIN	60 MM DIN Cap (Buttress Thread)

V20207



PART NO.	DESCRIPTION
LANYARD	
V20207	11" Polyurethane Lanyard



200CAPSH



200CAP

PART NO.	DESCRIPTION
2" CAM LEVER DUST CAP	
200CAPSH	2" Cam Lever Dust Cap w/short arms
200CAP	2" Cam Lever Dust Cap



201CAPSH



202CAP

PART NO.	DESCRIPTION
2" CAM LEVER DUST CAP	
201CAPSH	2" Cam Lever Dust Cap w/short arms & rings
202CAP	2" Cam Lever Dust Cap

TANK LIDS, VALVES & ACCESSORIES

Tank Lids and J-Bolts

Poly Tank Lids for Snyder Tanks



343047



341028



343080



343012

PART NO.	DESCRIPTION
POLY TANK LIDS FOR SNYDER TANKS	
343047	6" Screw on cap - female
341028	8" Lid assembly - male
343080	10" Threaded cap - female
343012	18" Lid assembly
347352	24" Lid Assembly
857097840	24" Poly Transport Lid - 2600 Elliptical (p/n 847) and all Value Added Tanks
345008	Poly lid tie

Poly Tank Lids for Poly Processing Tanks

PART NO.	DESCRIPTION
POLY TANK LIDS FOR POLY PROCESSING TANKS	
4791	10" lid w/coarse male thread
5167	12" lid for Poly Processing tank
4558	17" cap for Poly Processing tank
1002121	17" 1/2 turn lid w/coarse male thread



4791



5167



4558



1002121

Economy Tank Lids



MLT-06

MLT16



PART NO.	DESCRIPTION
ECONOMY TANK LIDS	
MLT-06	Center cap for MLT16
MLT16	18" Vented tank lid w/center cap and ring
356060	16" Road Warrior tank lid with integrated air breather

356060

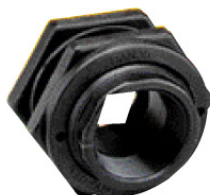


Bulkhead Tank Fittings



Poly Bulkhead Fittings

- Double sided threads.
- Available with EPDM or FKM (viton type) gasket.



316 Stainless Steel Bulkhead Fittings

- Double sided threads.
- Standard with EPDM gasket FKM (viton type) available.



PART NO.	DESCRIPTION
POLY BULKHEAD FITTINGS	
TF050	1/2" Poly Bulkhead EPDM Tank Fitting
TF050V	1/2" Poly Bulkhead FKM(viton type) Tank Fitting
TF075	3/4" Poly Bulkhead EPDM Tank Fitting
TF075V	3/4" Poly Bulkhead FKM(viton type) Tank Fitting
TF100	1" Poly Bulkhead EPDM Tank Fitting
TF100V	1" Poly Bulkhead FKM(viton type) Tank Fitting
TF125	1-1/4" Poly Bulkhead EPDM Tank Fitting
TF125V	1-1/4" Poly Bulkhead FKM(viton type) Tank Fitting
TF150	1-1/2" Poly Bulkhead EPDM Tank Fitting
TF150V	1-1/2" Poly Bulkhead FKM(viton type) Tank Fitting
TF200	2" Poly Bulkhead EPDM Tank Fitting
TF200V	2" Poly Bulkhead FKM(viton type) Tank Fitting
TF220	2" Poly Bulkhead EPDM Tank Fitting
TF220V	2" Poly Bulkhead FKM(viton type) Tank Fitting
TF300	3" Poly Bulkhead EPDM Tank Fitting
TF300V	3" Poly Bulkhead FKM(viton type) Tank Fitting
TF400	4" Poly Bulkhead EPDM Tank Fitting
TF400V	4" Poly Bulkhead FKM(viton type) Tank Fitting

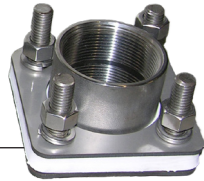
PART NO.	DESCRIPTION
316 STAINLESS STEEL BULKHEAD FITTINGS	
TF038SS	3/8" SS Bulkhead Tank Fitting
TF050SS	1/2" SS Bulkhead Tank Fitting
TF075SS	3/4" S.S. Bulkhead Tank Fitting
TF100SS	1" S.S. Bulkhead Tank Fitting
TF125SS	1-1/4" S.S. Bulkhead Tank Fitting
TF150SS	1-1/2" S.S. Bulkhead Tank Fitting
TF200SS	2" S.S. Bulkhead Tank Fitting
TF220SS	2" S.S. Bulkhead Tank Fitting
TF300SS	3" S.S. Bulkhead Tank Fitting

PART NO.	DESCRIPTION	FITS POLY	FITS SS
BULKHEAD GASKETS			
100G	3/8" (1" Hole Dia) EPDM	—	TF038SS
100GV	3/8" (1" Hole Dia) FKM (viton type)	—	TF038SS
TF138GV	1/2" (1-3/8" Hole Dia) FKM (viton type)	—	TF050SS
150G	1/2" & 3/4" (1-5/8" Hole Dia.) EPDM	TF050 & TF075	TF075SS
150GV	1/2" & 3/4" (1-5/8" Hole Dia.) FKM (viton type)	TF050 & TF075	TF075SS
200G	1" & 1-1/4" (2-1/4" Hole Dia.) B.Head Fitting Gasket EPDM	TF100 & TF125	TF100SS & TF125SS
200GV	1" & 1-1/4" (2-1/4" Hole Dia.) B.Head Fitting Gasket FIM (viton type)	TF100 & TF125	TF100SS & TF125SS
300G	1-1/2" & 2" (3" Hole Dia.) B.Head Fitting Gasket EPDM	TF200 & TF150	TF200SS & TF150SS
300GV	1-1/2" & 2" (3" Hole Dia.) B.Head Fitting Gasket FKM (viton type)	TF200 & TF150	TF200SS & TF150SS
TF220G	2" (3-1/4" Hole Dia.) B.Head Fitting Gasket FKM (viton type)	TF220	TF220SS
TF300G	3" (4-1/2" Hole Dia.) B.Head Fitting Gasket EPDM	TF300	TF300SS
TF400G	4" (5-3/4" Hole Dia.) EPDM	TF400	—
TF400GV	4" (5-3/4" Hole Dia.) FKM (viton type)	TF400	—

**UPS
SAME DAY
SHIPPING!**

316 Stainless Steel Tank Fittings

Big W 316 Stainless Steel 4-Bolt Tank Fittings



PART NO.	DESCRIPTION
316 STAINLESS STEEL 4-BOLT COUPLERS	
TA-SS-3/4-FC	3/4" Full Coupler
TA-SS-1-FC	1" Full Coupler
TA-SS-1-1/2-FC	1-1/2" Full Coupler
TA-SS-2-FC	2" Full Coupler



PART NO.	DESCRIPTION
316 STAINLESS STEEL 4-BOLT HALF NIPPLES	
TA-SS-1/2-HN	1/2" Half Nipple
TA-SS-3/4-HN	3/4" Half Nipple
TA-SS-1-HN	1" Half Nipple
TA-SS-1-1/2-HN	1-1/2" Half Nipple
TA-SS-2-HN	2" Half Nipple



PART NO.	DESCRIPTION
316 STAINLESS STEEL 4-BOLT FULL NIPPLES	
TA-SS-1/2-FN	1/2" Full Nipple
TA-SS-3/4-FN	3/4" Full Nipple
TA-SS-1-FN	1" Full Nipple
TA-SS-1-1/2-FN	1-1/2" Full Nipple
TA-SS-2-FN	2" Full Nipple

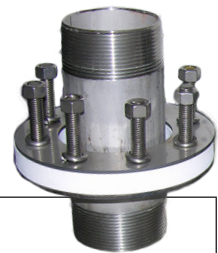
Big W 316 Stainless Steel 8-Bolt Tank Fittings



PART NO.	DESCRIPTION
316 STAINLESS STEEL 8-BOLT COUPLERS	
TA-SS-3-FC	3" Full Coupler
TA-SS-4-FC	4" Full Coupler

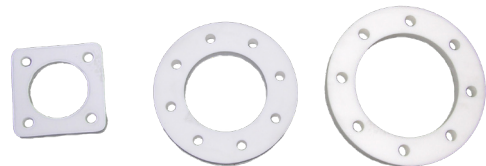


PART NO.	DESCRIPTION
316 STAINLESS STEEL 8-BOLT HALF NIPPLES	
TA-SS-3-HN	3" Half Nipple



PART NO.	DESCRIPTION
316 STAINLESS STEEL 8-BOLT FULL NIPPLES	
TA-SS-3-FN	3" Full Nipple

Big W Replacement Gaskets



PART NO.	DESCRIPTION
REPLACEMENT GASKETS	
TA-G-1/2 -2	For 1/2" - 2" Fittings
TA-G-3	For 3" Fittings
TA-G-4	For 4" Fittings

Tank Flanges



Poly Bolted Bottom Drain Tank Flanges PATENTED

Features:

- Stainless Steel Bolts.
- Bolt Head Plugs Sealed Ultrasonically.
- Glass Reinforced Polypropylene.
- Longer Bolts Available



Poly Bolted Tank Flanges

Features:

- Stainless Steel Bolts.
- Bolt Head Plugs Sealed Ultrasonically.
- Glass Reinforced Polypropylene
- EPDM Gaskets Standard FKM (viton type) Available



PART NO.	DESCRIPTION
POLY BOTTOM DRAIN BOLTED TANK FLANGES	
BF075BD	3/4" X 1" Threaded Flange EPDM
BF075BDV	3/4" x 1" Threaded Flange FKM (viton type)
BF100BD	1" x 1" Threaded Flange EPDM
BF125BD	1-1/4" x 1" Threaded Flange EPDM
BF125BDV	1-1/4" x 1" Threaded Flange FKM (viton type)
BF150BD	1-1/2" x 2" Threaded Standard Port Flange EPDM
BF150BDV	1-1/2" x 2" Threaded Standard Port Flange FKM (viton type)
BF200BD	2" x 2" Threaded Standard Port Flange EPDM
BF200BDV	2" x 2" Threaded Standard Port Flange FKM (viton type)
BF220BD	2" x 2" Threaded Full Port Flange EPDM
BF300BD	3" x 3" Threaded Flange Flange EPDM
BF300BDV	3" x 3" Threaded Flange Flange FKM (viton type)

PART NO.	DESCRIPTION
POLY BOLTED TANK FLANGES	
BF075	3/4" x 1-1/2" Threaded Flange EPDM
BF075V	3/4" x 1-1/2" Threaded Flange FKM (viton type)
BF100	1" x 1-1/2" Threaded Flange EPDM
BF150	1-1/2" x 2" Threaded Flange EPDM
BF150V	1-1/2" x 2" Threaded Flange FKM (viton type)
BF200	2" x 2" Std. Port Threaded Flange EPDM
BF200V	2" x 2" Std. Port Threaded Flange FKM (viton type)
BF220	2" x 2" Full Port Threaded Flange EPDM
BF300	3" x 3" Threaded Flange EPDM

POLY BOTTOM DRAIN BOLTED TANK FLANGE GASKETS	
BF100GE	3/4", 1" & 1 1/4" Full Gasket EPDM
BF100GV	3/4", 1" & 1 1/4" Full Gasket FKM (viton type)
BF100GRE	3/4", 1" & 1 1/4" Foot Gasket EPDM
BF100GRV	3/4", 1" & 1 1/4" Foot Gasket FKM (viton type)
BF200GE	1-1/2" & 2" Standard Port Full Gasket EPDM
BF200GV	1-1/2" & 2" Standard Port Gasket FKM (viton type)
BF200GFE	1-1/2" & 2" Std. Port, 2" Full Port Flange Gasket EPDM
BF200GFV	1-1/2" & 2" Std. Port, 2" Full Port Flange Gasket FKM (viton type)
BF220GE	2" Full Port Gasket EPDM
BF220GV	2" Full Port Gasket FKM (viton type)
BF300GE	3" Full Gasket EPDM
BF300GV	3" Full Gasket FKM (viton type)
BF300GFE	3" Foot Gasket EPDM
BF300GFV	3" Foot Gasket FKM (viton type)

Bolted Tank Flange Gaskets

EPDM Gaskets Standard FKM (viton type) Available



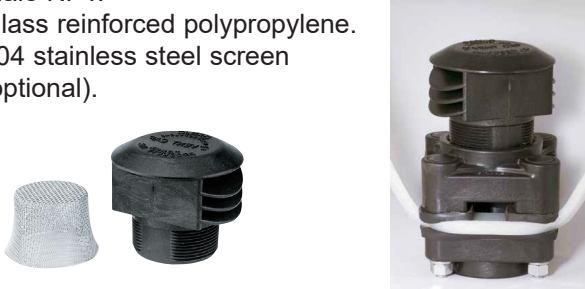
PART NO.	DESCRIPTION
BOLTED TANK FLANGE GASKETS	
BF100GE	3/4", 1" & 1 1/4" EPDM
BF100GV	3/4", 1" & 1 1/4" FKM (viton type)
BF200GE	1 1/2" & 2" Standard Port EPDM
BF200GV	1 1/2" & 2" Standard Port FKM (viton type)
BF220GE	2" Full Port EPDM
BF220GV	2" Full Port FKM (viton type)
BF300GE	3" EPDM
BF300GV	3" FKM (viton type)

Tank Flanges

Anti Vortex Vent Caps (With or Without Screen)

Features:

- Male NPT.
- Glass reinforced polypropylene.
- 304 stainless steel screen (optional).



FKM (VITON TYPE)	DESCRIPTION
POLYPROPYLENE VENT CAPS	
VC200	2" Vent Cap/Anti Vortex with No Screen
VC300	3" Vent Cap/Anti Vortex with No Screen
VC230	2" Vent Cap/Anti Vortex with 16 mesh Screen
VC330	3" Vent Cap/Anti Vortex with 10 mesh Screen

Tank Repair Kit

Features:

- Includes specially formulated welding wire with copolymers and adhesives.
- May be used to effectively repair linear polyethylene.
- Requires only 110 volt power.
- Easy to use.



Polypropylene Class 150 ANSI Flanges



PART NO.	DESCRIPTION
150# THREADED ANSI FLANGES	
AF100	1" Female Thread ANSI Flange
AF150	1-1/2" Female Thread ANSI Flange
AF200	2" Female Thread ANSI Flange
AF300	3" Female Thread ANSI Flange
AF400	4" Female Thread ANSI Flange



PART NO.	DESCRIPTION
150# BLIND ANSI FLANGES	
AFB200	2" Blind ANSI Flange
AFB300	3" Blind ANSI Flange
AFB400	4" Blind ANSI Flange



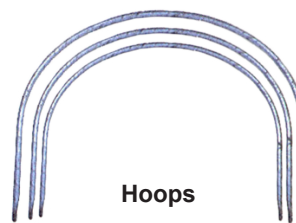
PART NO.	DESCRIPTION
ANSI FLANGE GASKETS	
AF100G	1" ANSI Flange Gasket – EPDM
AF100GV	1" ANSI Flange Gasket – FKM (viton type)
AF150G	1-1/2" ANSI Flange Gasket – EPDM
AF150GV	1-1/2" ANSI Flange Gasket – FKM (viton type)
AF200G	2" ANSI Flange Gasket – EPDM
AF200GV	2" ANSI Flange Gasket – FKM (viton type)
AF300G	3" ANSI Flange Gasket – EPDM
AF300GV	3" ANSI Flange Gasket – FKM (viton type)
AF400G	4" ANSI Flange Gasket – EPDM
AF400GV	4" ANSI Flange Gasket – FKM (viton type)

UPS SAME DAY SHIPPING!

Bands, Hoops, Saddles and Straps



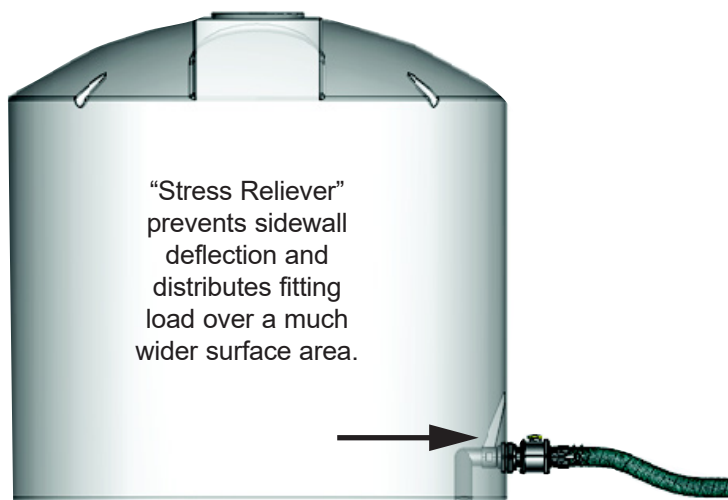
Stainless Steel Bands



Hoops

PART NO.	TANK CAPACITY	TANK SIZE
HORIZONTAL LEG TANK BANDS & HOOPS		
339093	56" Stainless Steel Band for 30 & 60 Gallon Leg Tank	30 & 60 Gallon - Sold Individually
339094	74" Stainless Steel Band for 125 Gallon Leg Tank	125 Gallon - Sold Individually
339095	94" Stainless Steel Band for 230 & 300 Gallon Leg Tank	230 & 300 Gallon - Sold Individually
339096	Stainless Steel Band for 525 Gallon Leg Tank	525 Gallon - Sold Individually
339097	136" Stainless Steel Band for 730 Gallon Leg Tank	730 Gallon - Sold Individually
347104	J-Bolt Package (3/8") Set of 4	
350001	J-Bolt (3/8") Sold Individually	
350051	J-Bolt (1/2") Sold Individually	
347000530	J-Bolt for 3000 Nurse Hoops (Sold as a set of 8)	
459022	Hoop for 730 Gallon Leg Tank (3 required)	730 x 54 (Sold Individually)
H33900380	Hoop for 300 Gallon Leg Tank (2 required)	300 x 38 (Sold as a set of 2)
H33900381-500	Hoop for 500 Gallon Leg Tank (2 required)	500x x49 (Sold as a set of 2)

Stress Reliever



The Stress Reliever can be ordered with your bulk tank purchase already installed (assembled to the fitting and siphon tube) or, it can be ordered separately to retrofit your tanks in the field.



34100380 & 34100379

PART NO.	DESCRIPTION
STRESS RELIEVER	
34701647	2" Bolted fitting w/Stress Reliever adapter and siphon tube
34100380	2" Stress Reliever - adapter only
34701630	3" Bolted fitting w/Stress Reliever adapter and siphon tube
34100379	3" Stress Reliever - adapter only

The Stress Reliever is available in a 3" thread size only, and is designed exclusively to fit the Snyder Industries 3" bolted fitting.

TeeJet Tank Rinsing Nozzles



Tank Rinsing Nozzles

55270

- Rotating head driven by the flow of the rinsing liquid through multiple round spray orifices.
- Solid stream sprays are precisely positioned to provide effective internal wetting and cleaning of tank surface.
- Removable retainer and rotating body allows for disassembly and cleaning.
- Provides 360° coverage of inside surface of tank for tank diameters up to 10 feet (3.0 m).
- Self-lubricating and self-flushing design.
- Materials: Body – black POM (acetal); Fasteners – stainless steel.
- Recommended operating pressure 10–50 PSI (0.7–3.5 bar).
- Mounting connection – 1/2" or 3/4" NPT.



55270-1/2-11-POM

NOZZLE NUMBER	CAPACITY - GPM					TYPE OF COVERAGE	SPRAY ANGLE
	10 PSI	20 PSI	30 PSI	40 PSI	50 PSI		
55270-1/2-11-POM	5.9	7.9	9.4	11.0	12.4		360°
55270-3/4-18-POM	9.0	12.7	15.6	18.0	20.0		

D41892

- The rotary tank rinsing nozzle is used for rinsing the insides of chemical containers and spray tanks up to 6.58 (2.0 m) in diameter.
- Available with 1/2" NPT or BSPT (F) connections.
- Significant lower rotating speed at approximately 15% of typical speed, results in faster and more thorough cleaning of tank surface.
- Self-cleaning sliding bearing.
- Body and inserts are made of POM (Acetal).
- Nozzle fits in 1-1/2" (37 mm) opening.
- Recommended operating pressure 30–60 PSI (2–4 bar) with a maximum pressure 115 PSI (8 bar).



D41892-1/2-POM-6

NOZZLE NUMBER	CAPACITY - GPM				
	20 PSI	30 PSI	40 PSI	50 PSI	60 PSI
D41892-1/2-POM-6	4.0	4.9	5.7	6.4	7.0

Eductor Nozzles

Y33180-PP & Y9270-PP

- Allows small pumps to circulate large volumes of liquid.
- Manufactured of glass-filled polypropylene for excellent corrosion and chemical resistance.
- Large flow opening minimizes plugging.
- Available in 3/8" or 3/4" (M) pipe thread inlet connection.



Y9270-PP

MODEL NUMBER	PIPE THREAD INLET CONNECTION	ORIFICE DIAMETER	LENGTH	DIAMETER
Y33180-PP	5/16" (M)	5/16"	4-1/16"	2-1/16"
Y9270-PP	3/4" (M)	3/8"	6-3/8"	2-29/32"

How to Order:

Specify nozzle number and inlet connection.
Example: Y33180-PP-3/8

TeeJet Tank Rinsing Nozzles



Container Rinsing Nozzles - 23240

- The 23240 container rinsing nozzle is used to rinse residue from containers.
- Can be used for containers with 1-1/32" (26 mm) diameter openings or larger.
- Three flat spray orifices provide self-rotational forces• Available in 1/2" NPT or BSPT (F) connections.
- Made of 316 stainless steel. HSS bearings and races have been replaced with 316 SS bearings and races. Also includes an internal sleeve made of Nylon.



23240-3-316SS-7-316SS

NOZZLE NUMBER	INLET PIPE CONNECTION	CAPACITY - GPM				
		20 PSI	30 PSI	40 PSI	50 PSI	60 PSI
23240-3-316SS-5.7-316SS	1/2" (F)	4.0	4.9	5.7	6.4	7.0
23240-3-316SS-7-316SS		4.9	6.1	7.0	7.8	8.6

VSM

- Used for inside rinsing of chemical containers.
- 40 orifices combine to produce a 240° spray angle.
- All Nylon construction.
- Available with 1/2" or 3/4" NPT connection.
- Recommended operating pressure 30–60 PSI (2–4 bar).



VSM-*-44

NOZZLE NUMBER	INLET PIPE CONNECTION	ORIFICE DIAMETER	CAPACITY - GPM						SPRAY ANGLE
			20 PSI	30 PSI	40 PSI	60 PSI	80 PSI	100 PSI	
VSM-*-28	1/2" (F)	.031"	3.9	4.8	5.5	6.7	7.8	8.7	240°
VSM-*-44		.039"	6.1	7.5	8.6	10.6	12.2	13.7	
VSM-*-90	1/2" or 3/4" (F)	.059"	12.5	15.3	17.7	22	25	28	
VSM-*-140		.077"	19.4	24	27	34	39	43	
VSM-*-190		.091"	26	32	37	46	53	59	

How to Order:

VSM 3/4 140

| | |
TYPE SIZE CAPACITY

Jet Agitators - 6290-SC

Made in choice of brass, aluminum and all stainless steel. 1/4" NPT (F) inlet connection. Fits through 2" (51 mm) hole. Weight 6 oz. (0.17 kg). Siphon caps increase liquid flow by Venturi action to increase mixing potential. Installed at bottom of spray tank on end of agitator return line. Continuous solid stream jet flow creates turbulence and keeps wettable powders in suspension.



6290SC-3

JET AGITATOR NUMBER	ORIFICE CAP NUMBER	ORIFICE CAP INLET DIAMETER	CAPACITY (GPM) THRU AGITATOR LINE AT VARIOUS PRESSURES							FOR MAX TANK SIZE IN GALLONS OF
			10 PSI	15 PSI	20 PSI	30 PSI	40 PSI	50 PSI		
6290SC-1	11118-1	.055"	.78	.96	1.1	1.4	1.6	1.8	50	
6290SC-2	11118-2	.086"	1.9	2.3	2.7	3.3	3.8	4.3	110	
6290SC-3	11118-3	.096"	2.4	2.9	3.3	4.1	4.7	5.3	140	
6290SC-5	11118-5	.144"	4.4	5.4	6.2	7.6	8.8	9.9	250	
6290SC-8	11118-8	.156"	5.1	6.3	7.2	8.8	10.2	11.4	300	
6290SC-10	11118-10	.177"	5.7	7.0	8.0	9.7	11.4	12.7	350	

How to Order:

Specify jet agitator number.

Examples:

6290SC-1 – Brass

6290SC-1-AL – Aluminum

6290SC-1-SS – Stainless Steel

Other sizes available.